

*Fewer moving parts, aerodynamic speed control, and no need for lubrication make the T100-C the most reliable starting motor for Solar Engines.*

### SPECIFICATIONS

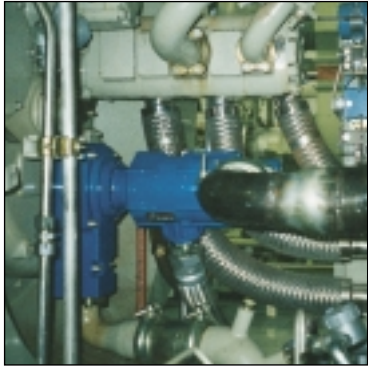
accommodating for existing oil flow and drainage from the accessory drive. Kits are available that utilize existing inlet steel braided flex hoses as well as the exhaust hoses. It's an easy bolt together operation. No welding or cutting. Your TDI representative will be able to assess your Centaur or Taurus starting package and provide the right parts for your installation.

**More Power = Better Starting.** Expect more than 25% more horsepower and superior starting torque per unit of gas from the T100-C. The fast cranking RPM available also promotes faster starting cycles. This equates to less gas consumption and less wear on the starting system. The TurboTwin motor can also be designed to operate on much lower inlet gas pressures for field gas applications and fixed volume applications.

<b>Engines:</b>	Solar Centaur and Solar Taurus.
<b>Power:</b>	140 hp (68 Kw) at 150 psig inlet (10 BAR)
<b>Weight:</b>	T106 35 lbs. T115 31 lbs. (motor only)
<b>Air/Gas Supply:</b>	Natural gas or compressed air
<b>Pressure:</b>	(T115) 200 psig
<b>Installation:</b>	TDI provides special motor housings for precise mating to Solar Centaur and Taurus Engines.
<b>Gear ratio:</b>	9.0



T100-C on Solar Centaur Gas Turbine Engine.



**The T100-C turbine driven pneumatic starter motor has been designed to mount to the hydraulic and electric motor pad used to start the Solar Centaur Gas Turbine Engine.**

