

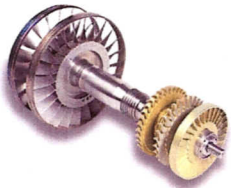


**Company:** Tech Development known internationally, as TDI.

**Operation Focus:** TDI has pioneered the use of turbine technology with its unique twin turbine-powered air starter for use on industrial, diesel, natural gas reciprocating engines, as well as a variety of industrial gas turbine engines.

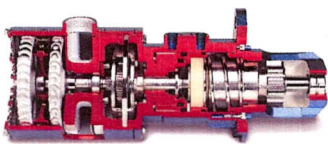
**Product Lines:** **TURBOTWIN™** Engine Air Starters  
**TURBOSTART™** Engine Air Starters  
Turbine powered air motors and a complete line of accessories like the **TURBOVALVE™** Relay valves and **TECHTORQUE™** Inertia Drives  
Turbo Machinery Design and Production  
Jet Engine Propulsion Simulators

**Company History:** Founded in 1958, TDI has become a worldwide leader in the design and fabrication of propulsion simulation equipment and developed a reputation for problem-solving, quick response and quality workmanship. TDI is supplying precision mechanical and pneumatic devices to a growing list of customers including Goodrich, Boeing, BAE, General Electric, NASA, Pratt & Whitney, Aerospatiale, Airbus Deutschland and the U.S. Air Force.

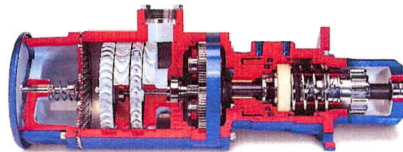


TDI introduced the first turbine powered starter for industrial engines in 1979. TDI is continuing to design and produce new products based on our innovative two-stage turbine technology. The **TURBOTWIN™** series of starters and industrial air motors are the most reliable turbine starters available on the market today.

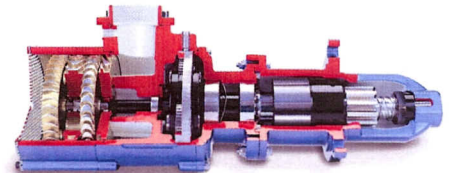
The **TURBOTWIN™** series starter comes in three basic power configurations, the T30 (30 Hp) for small engines in the 6 to 20 liter range; T106-F and T50-P (50 Hp) for medium sized engines in the 20 to 75 liter range; and T100 (100 Hp) for large engines in the 70 to 300 liter range.



T30-P



T50-P



T100-B

**Location:** **Tech Development**

P.O. Box 13557  
6800 Poe Avenue  
Dayton, Ohio 45413-0557

Phone: (937) 898-9600

Fax: (937) 898-8431

Website: [www.tdi-turbotwin.com](http://www.tdi-turbotwin.com)

